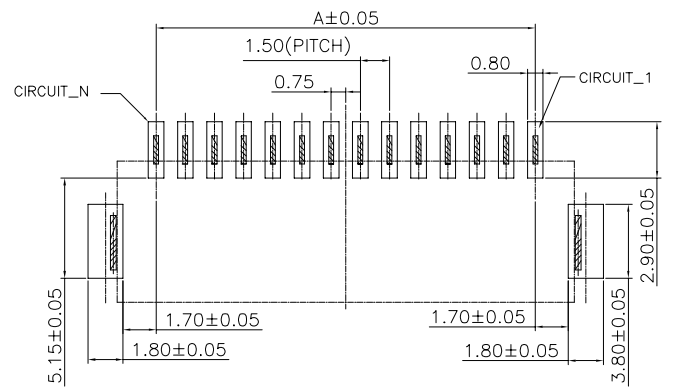
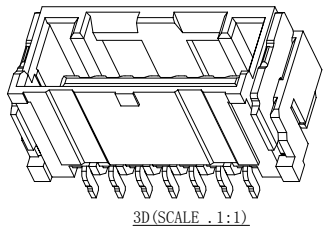
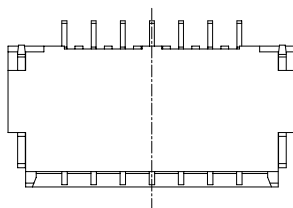
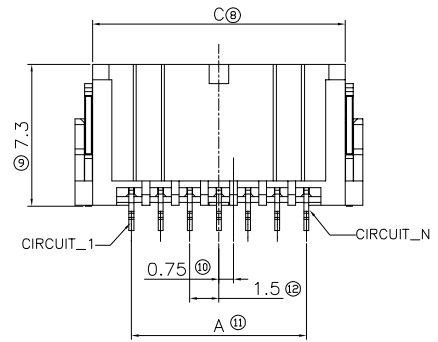
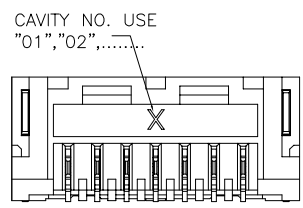
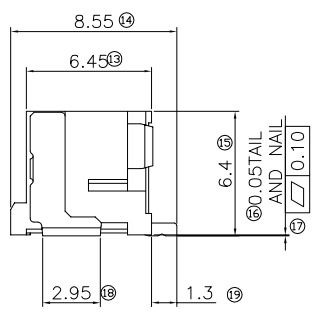
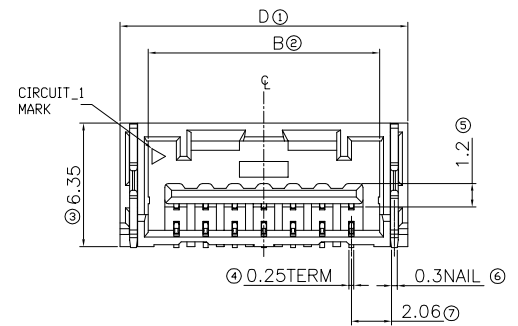


5	6	7	8
REV	DATE	ECN NO.	MODIFICATION
A0	2024/04/16		NEW
			APPROVER
			ABEL



RECOMMENDED PCB LAYOUT  
 TOLERANCE: ±0.05  
 THICKNESS : 0.8-1.6mm

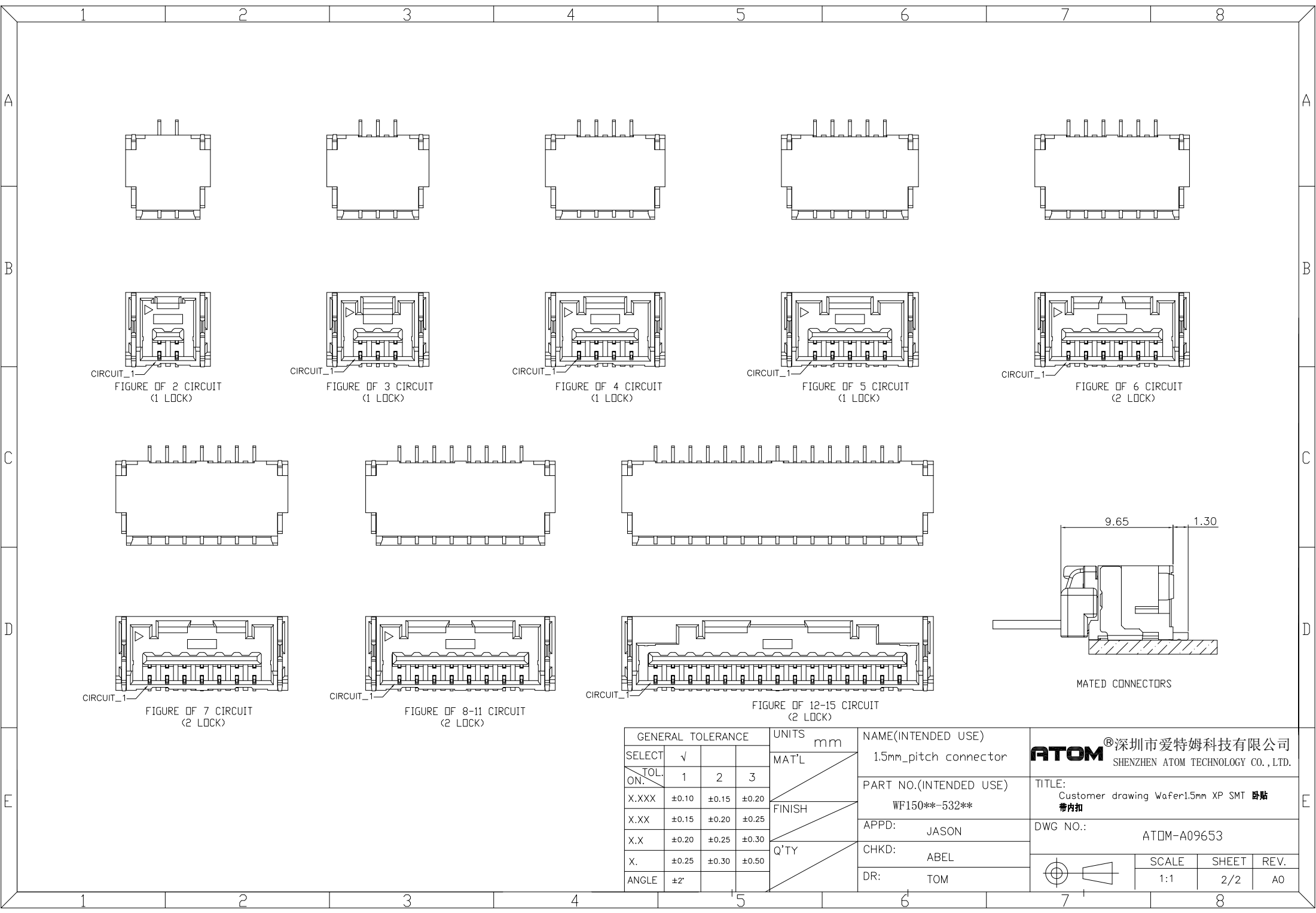


极数	尺寸			
	A	B	C	D
2PIN	1.5	4.4	5.5	7.3
3PIN	3.0	5.9	7.0	8.8
4PIN	4.5	7.4	8.5	10.3
5PIN	6.0	8.9	10.0	11.8
6PIN	7.5	10.4	11.5	13.3
7PIN	9.0	11.9	13.0	14.8
8PIN	10.5	13.4	14.5	15.8
9PIN	12.0	14.9	16.0	17.3
10PIN	13.5	16.4	17.5	18.8
11PIN	15.0	17.9	19.0	20.3
12PIN	16.5	19.4	20.5	21.8
13PIN	18.0	20.9	22.0	23.3
14PIN	19.5	22.4	23.5	24.8
15PIN	21.0	23.9	25.0	26.3

SPECIFICATION  
 1.MATERIAL:  
 HOUSING: PA, UL94V-0,COLOR:NATURAL .  
 CONTACTS: COPPER ALLOY T:0.25mm  
 TIN/GOLD PLATED OVER NICKEL PLATED  
 SOLDER TAB:SUS304 T:0.4mm  
 TIN/GOLD PLATED OVER NICKEL PLATED  
 2.ELECTRICAL CHARACTERISTICS:  
 2-1.RATED VOLTAGE ;AC/DC,100V  
 2-2.ALLOWABLE CURRENT(MAX.) AND APPLICABLE WIRES ;2.0A(24AWG),1.5A(26AWG),1.0A(28AWG), (φ0.78~φ1.28mm)Insulation O.D.  
 2-3.DIELECTRIC STRENGTH:500V AC FOR 1 MINUTE,  
 2-4.CONTACT RESISTANCE: 20mΩ MAX.  
 2-5.INSULATION RESISTANCE:DC 500V/500 MΩ MIN.  
 2-6.AMBIENT TEMPERATURE RANGE:-40°C~+105°C  
 2-7.STORAGE TEMPERATURE: -5°C~+35°C. 70%R.H.MAX.(NO CONDENSATION)

PART NO. WF150\*\*-53\*\*\*  
 产品代码WF:Wafer简写  
 产品间距:1.50mm  
 产品Pin位: 02-15  
 53:卧式带内扣  
 54:立式带内扣  
 1表示管装,2表示卷装  
 3.表示盘装,4表示袋装,  
 5.表示盒装  
 预留码

GENERAL TOLERANCE			UNITS	NAME(INTENDED USE)		<b>ATOM</b> 深圳市爱特姆科技有限公司 SHENZHEN ATOM TECHNOLOGY CO., LTD.
SELECT	√		mm	15mm_pitch connector		
TOL.	1	2		PART NO.(INTENDED USE)		TITLE:
ON.	X.XXX	±0.10	±0.15	±0.20	WF150**-532**	Customer drawing Wafer1.5mm XP SMT 卧式带内扣
	X.XX	±0.15	±0.20	±0.25	APPD: JASON	DWG NO.:
	X.X	±0.20	±0.25	±0.30	CHKD: ABEL	ATOM-A09653
	X.	±0.25	±0.30	±0.50	DR: TOM	SCALE SHEET REV.
ANGLE	±2'					1:1 1/2 AO



CIRCUIT\_1  
FIGURE OF 2 CIRCUIT  
(1 LOCK)

CIRCUIT\_1  
FIGURE OF 3 CIRCUIT  
(1 LOCK)

CIRCUIT\_1  
FIGURE OF 4 CIRCUIT  
(1 LOCK)

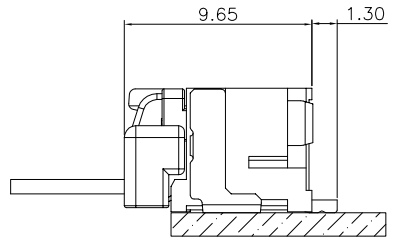
CIRCUIT\_1  
FIGURE OF 5 CIRCUIT  
(1 LOCK)

CIRCUIT\_1  
FIGURE OF 6 CIRCUIT  
(2 LOCK)

CIRCUIT\_1  
FIGURE OF 7 CIRCUIT  
(2 LOCK)

CIRCUIT\_1  
FIGURE OF 8-11 CIRCUIT  
(2 LOCK)

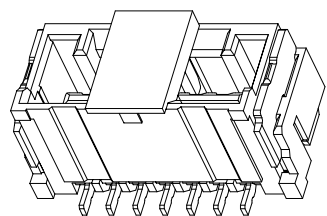
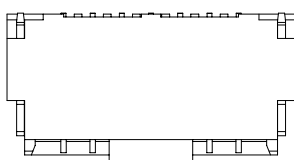
CIRCUIT\_1  
FIGURE OF 12-15 CIRCUIT  
(2 LOCK)



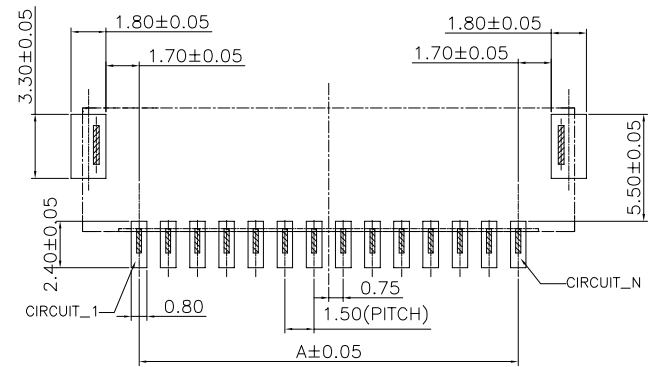
MATED CONNECTORS

GENERAL TOLERANCE			UNITS	NAME(INTENDED USE)	<b>ATOM</b> ®深圳市爱特姆科技有限公司 SHENZHEN ATOM TECHNOLOGY CO., LTD.
SELECT	√		mm		
TOL. ON.	1	2	3	PART NO.(INTENDED USE)	TITLE:
X.XXX	±0.10	±0.15	±0.20	WF150**-532**	Customer drawing Wafer1.5mm XP SMT 贴片
X.XX	±0.15	±0.20	±0.25	FINISH	带内扣
X.X	±0.20	±0.25	±0.30	Q'TY	DWG NO.:
X.	±0.25	±0.30	±0.50		ATOM-A09653
ANGLE	±2'			CHKD: ABEL	SCALE
				DR: TOM	1:1
					SHEET
					2/2
					REV.
					AO

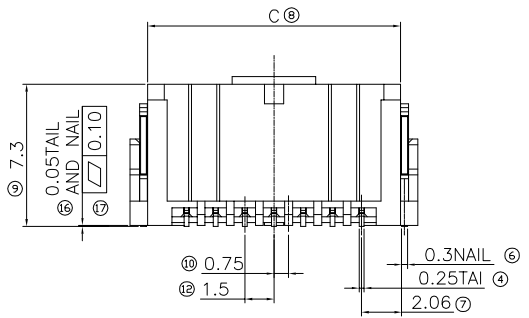
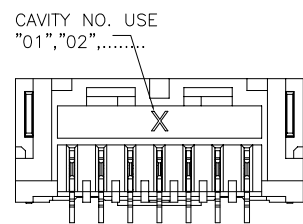
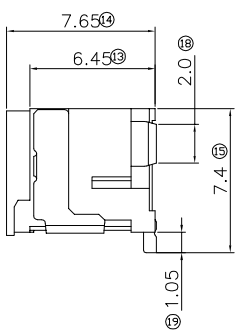
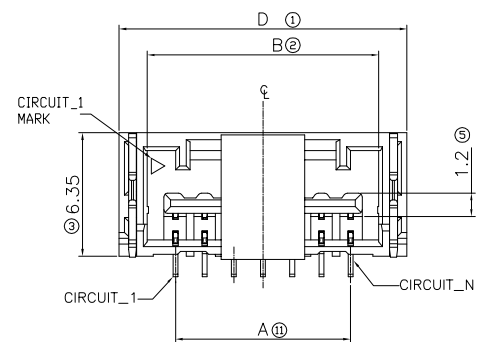
REV	DATE	ECN NO.	MODIFICATION	APPROVER
A0	2024/04/16		NEW	ABEL



3D(SCALE : 1:1)



RECOMMENDED PCB LAYOUT  
TOLERANCE: ±0.05  
THICKNESS : 0.8-1.6mm



极数	尺寸			
	A	B	C	D
2PIN	1.5	4.4	5.5	7.3
3PIN	3.0	5.9	7.0	8.8
4PIN	4.5	7.4	8.5	10.3
5PIN	6.0	8.9	10.0	11.8
6PIN	7.5	10.4	11.5	13.3
7PIN	9.0	11.9	13.0	14.8
8PIN	10.5	13.4	14.5	15.8
9PIN	12.0	14.9	16.0	17.3
10PIN	13.5	16.4	17.5	18.8
11PIN	15.0	17.9	19.0	20.3
12PIN	16.5	19.4	20.5	21.8
13PIN	18.0	20.9	22.0	23.3
14PIN	19.5	22.4	23.5	24.8
15PIN	21.0	23.9	25.0	26.3

PART NO. WF150\*\*-54\*\*\*

产品代码WF:Wafer简写

产品间距:1.50mm

产品Pin位: 02-15

53:卧式带内扣

54:立式带内扣

1表示管装,2表示卷装  
3.表示盘装,4表示袋装,  
5.表示盒装

预留码

SPECIFICATION

1.MATERIAL:  
HOUSING: PA,UL94V-0,COLOR:NATURAL .  
CONTACTS: COPPER ALLOY T:0.25mm  
TIN/GOLD PLATED OVER NICKEL PLATED  
SOLDER TAB:SUS304 T0.4mm  
TIN/GOLD PLATED OVER NICKEL PLATED

2.ELECTRICAL CHARACTERISTICS:  
2-1.RATED VOLTAGE ;AC/DC,100V  
2-2.ALLOWABLE CURRENT(MAX.) AND APPLICABLE WIRES ;2.0A(24AWG),1.5A(26AWG),1.0A(28AWG), (φ0.78~φ1.28mm)Insulation O.D.  
2-3.DIELECTRIC STRENGTH:500V AC FOR 1 MINUTE,  
2-4.CONTACT RESISTANCE: 20mΩ MAX.  
2-5.INSULATION RESISTANCE:DC 500V/500 MΩ MIN.  
2-6.AMBIENT TEMPERATURE RANGE:-40°C~+105°C  
2-7.STORAGE TEMPERATURE: -5°C~+35°C. 70%R.H.MAX.(NO CONDENSATION)

GENERAL TOLERANCE			UNITS
SELECT	1	2	3
TOL.	1	2	3
X.XXX	±0.10	±0.15	±0.20
X.XX	±0.15	±0.20	±0.25
X.X	±0.20	±0.25	±0.30
X.	±0.25	±0.30	±0.50
ANGLE	±2'		

NAME(INTENDED USE)	15mm_pitch connector
PART NO.(INTENDED USE)	WF150**-542**
APPD:	JASON
CHKD:	ABEL
DR:	TOM

**ATOM** 深圳市爱特姆科技有限公司  
SHENZHEN ATOM TECHNOLOGY CO., LTD.

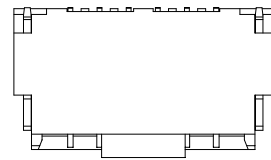
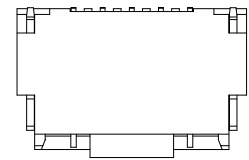
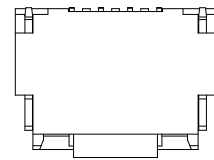
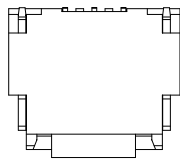
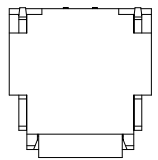
TITLE:  
Customer drawing Wafer1.5mm XP SMT立贴  
带内扣带夹持盖

DWG NO.: ATOM-A09652

SCALE	SHEET	REV.
1:1	1/2	A0

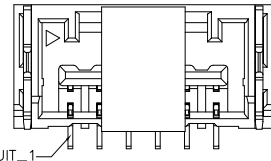
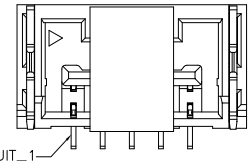
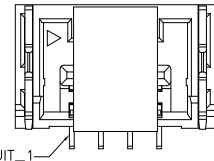
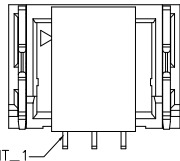
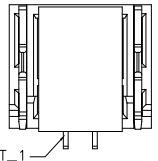
1 2 3 4 5 6 7 8

A



A

B



B

CIRCUIT\_1  
FIGURE OF 2 CIRCUIT  
(1 LOCK)

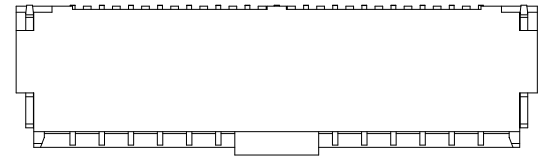
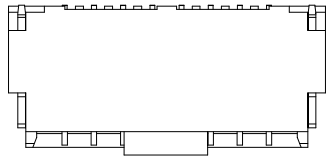
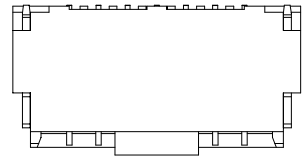
CIRCUIT\_1  
FIGURE OF 3 CIRCUIT  
(1 LOCK)

CIRCUIT\_1  
FIGURE OF 4 CIRCUIT  
(1 LOCK)

CIRCUIT\_1  
FIGURE OF 5 CIRCUIT  
(1 LOCK)

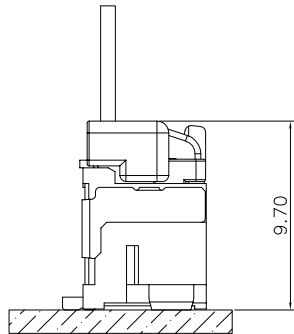
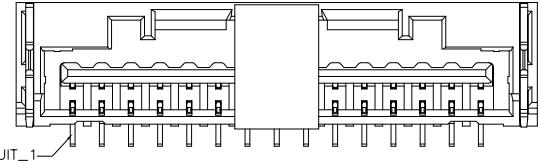
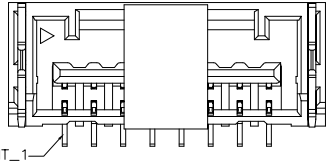
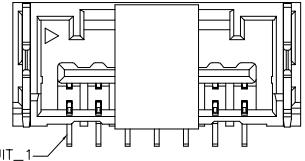
CIRCUIT\_1  
FIGURE OF 6 CIRCUIT  
(2 LOCK)

C



C

D



D

CIRCUIT\_1  
FIGURE OF 7 CIRCUIT  
(2 LOCK)

CIRCUIT\_1  
FIGURE OF 8-11 CIRCUIT  
(2 LOCK)

CIRCUIT\_1  
FIGURE OF 12-15 CIRCUIT  
(2 LOCK)

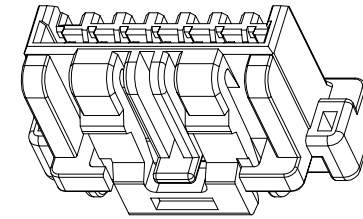
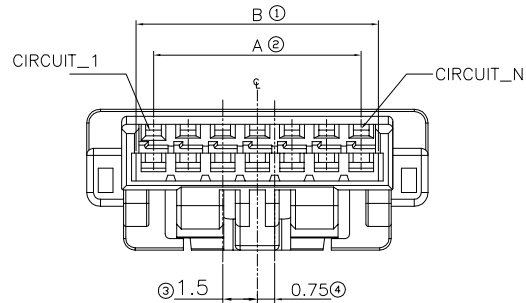
MATED CONNECTORS

E

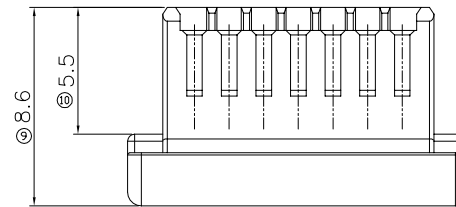
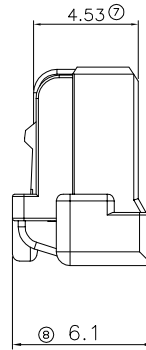
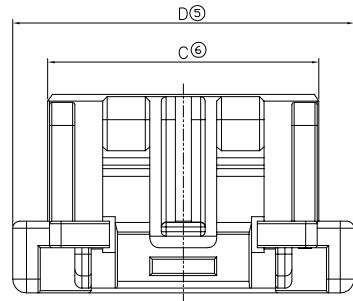
GENERAL TOLERANCE			UNITS	mm	NAME(INTENDED USE)	<b>ATOM</b> 深圳市爱特姆科技有限公司 SHENZHEN ATOM TECHNOLOGY CO., LTD.
SELECT	√		MAT'L		1.5mm_pitch connector	
TOL. ON.	1	2	3	FINISH	PART NO.(INTENDED USE)	TITLE:
X.XXX	±0.10	±0.15	±0.20	Q'TY	WF150**-542**	Customer drawing Wafer1.5mm XP SMT立贴 带内扣带夹持盖
X.XX	±0.15	±0.20	±0.25		APPD: JASON	DWG NO.:
X.X	±0.20	±0.25	±0.30		CHKD: ABEL	ATOM-A09652
X.	±0.25	±0.30	±0.50		DR: TOM	SCALE SHEET REV.
ANGLE	±2'					1:1 2/2 AO

1 2 3 4 5 6 7 8

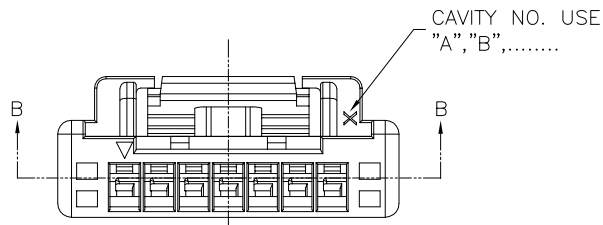
5	6	7	8
REV	DATE	ECN NO.	MODIFICATION
A0	2024/04/16		NEW
			APPROVER
			ABEL



3D(SCALE .1:1)



极数	尺寸			
	A	B	C	D
2PIN	1.5	3.0	4.25	7.3
3PIN	3.0	4.5	5.75	8.8
4PIN	4.5	6.0	7.25	10.3
5PIN	6.0	7.5	8.75	11.8
6PIN	7.5	9.0	10.25	13.3
7PIN	9.0	10.5	11.75	14.8
8PIN	10.5	12.0	13.25	15.8
9PIN	12.0	13.5	14.75	17.3
10PIN	13.5	15.0	16.25	18.8
11PIN	15.0	16.5	17.75	20.3
12PIN	16.5	18.0	19.25	21.8
13PIN	18.0	19.5	20.75	23.3
14PIN	19.5	21.0	22.25	24.8
15PIN	21.0	22.5	23.75	26.3



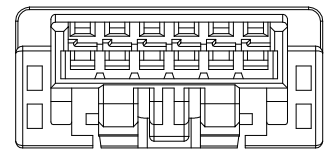
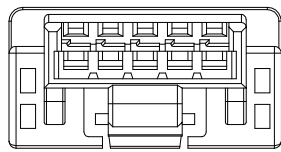
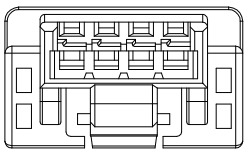
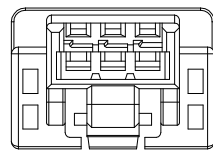
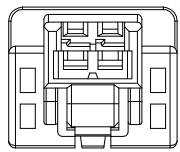
NOTE :

- MATERIAL SPECIFICATION,
  - HOUSING: PBT, COLOR: NATURAL. UL94 V-0.
- ELECTRICAL PERFORMANCE,
  - RATED VOLTAGE : AC/DC, 100V
  - ALLOWABLE CURRENT (MAX.) AND APPLICABLE WIRES : 2.0A (24AWG), 1.5A (26AWG), 1.0A (28AWG), ( $\phi 0.78 \sim \phi 1.28\text{mm}$ ) Insulation O.D.
  - DIELECTRIC STRENGTH: 500V AC FOR 1 MINUTE,
  - CONTACT RESISTANCE: 20m $\Omega$  MAX.
  - INSULATION RESISTANCE: DC 500V/500 M $\Omega$  MIN.
  - AMBIENT TEMPERATURE RANGE: -40°C ~ +105°C
- COMPLIANT WITH RoHS

GENERAL TOLERANCE			UNITS	NAME (INTENDED USE)		<b>ATOM</b> 深圳市爱特姆科技有限公司 SHENZHEN ATOM TECHNOLOGY CO., LTD.		
SELECT	√		mm	15mm_pitch connector				
TOL.	1	2	3	MAT'L	PART NO. (INTENDED USE)		TITLE:	
X.XXX	±0.10	±0.15	±0.20	FINISH	H0150** - 42400		Customer drawing PH1.5单排带内扣 XP HOUSING	
X.XX	±0.15	±0.20	±0.25		APPD:	JASON		DWG NO.:
X.X	±0.20	±0.25	±0.30	Q'TY	CHKD:		ATOM-A09791	
X.	±0.25	±0.30	±0.50		ABEL		SCALE SHEET REV.	
ANGLE	±2'			DR:	TOM		1:1 1/2 AO	

1 2 3 4 5 6 7 8

A



A

B

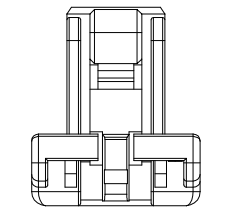


FIGURE OF 2 CIRCUIT  
(1 LOCK)

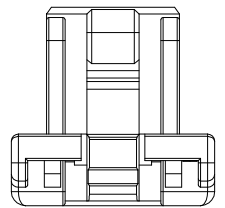


FIGURE OF 3 CIRCUIT  
(1 LOCK)

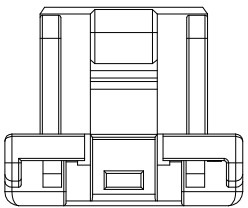


FIGURE OF 4 CIRCUIT  
(1 LOCK)

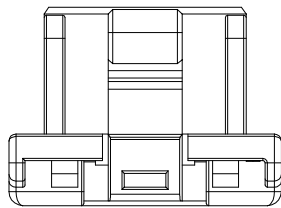


FIGURE OF 5 CIRCUIT  
(1 LOCK)

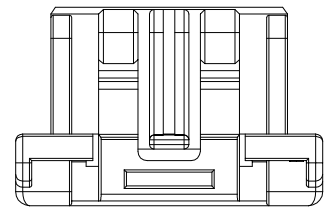
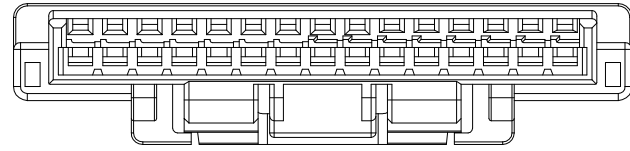
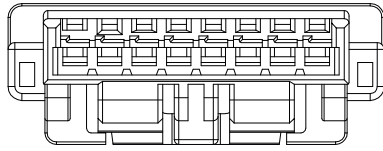
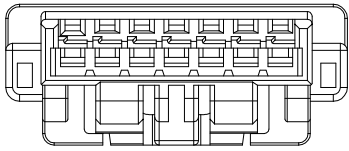


FIGURE OF 6 CIRCUIT  
(2 LOCK)

B

C



C

D

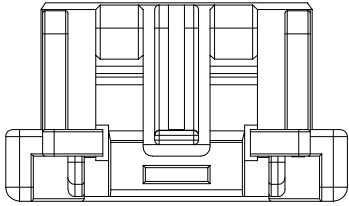


FIGURE OF 7 CIRCUIT  
(2 LOCK)

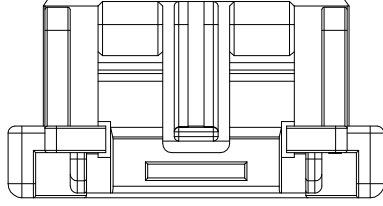


FIGURE OF 8-11 CIRCUIT  
(2 LOCK)

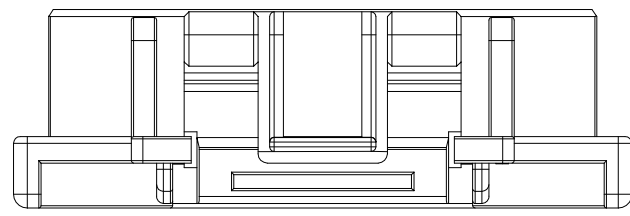


FIGURE OF 12-15 CIRCUIT  
(2 LOCK)

D

E

PART NO.  
H0150\*\*~42400

产品代码HO:Hosing简写  
产品间距:2.00mm  
产品Pin位: 02-15

—01: 预留码  
—4: 表示袋装  
—42: 带内扣Hosing

GENERAL TOLERANCE			UNITS
SELECT	1	2	mm
✓			
TOL.			
ON.	1	2	3
X.XXX	±0.10	±0.15	±0.20
X.XX	±0.15	±0.20	±0.25
X.X	±0.20	±0.25	±0.30
X.	±0.25	±0.30	±0.50
ANGLE	±2'		

MAT'L	FINISH	Q'TY

NAME(INTENDED USE)	
15mm_pitch connector	
PART NO.(INTENDED USE)	
H0150**~42400	
APPD: JASON	
CHKD: ABEL	
DR: TOM	

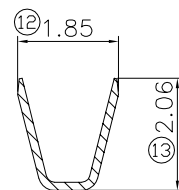
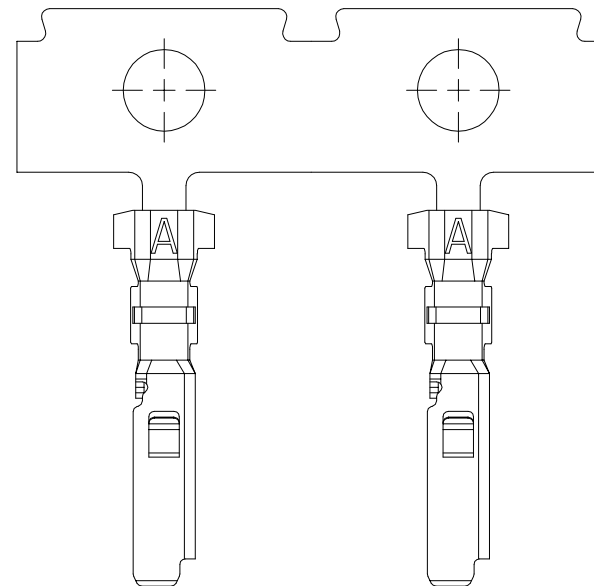
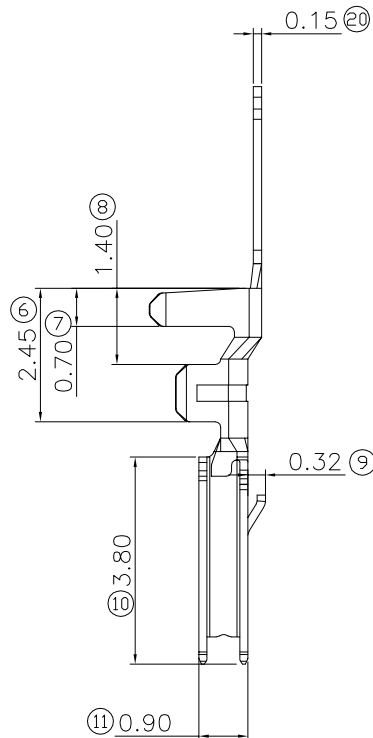
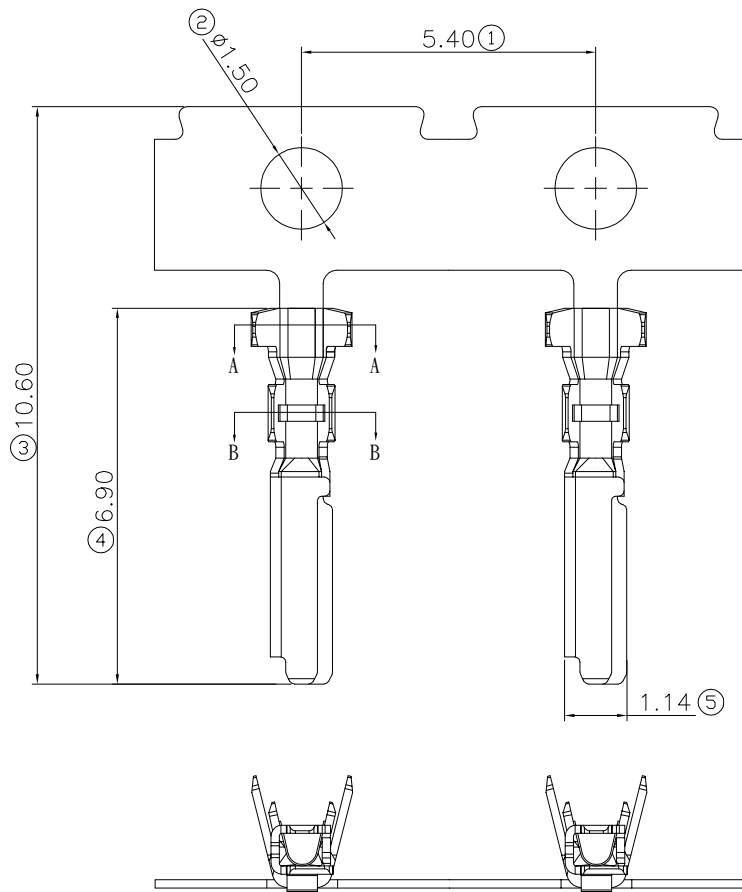
**ATOM** 深圳市爱特姆科技有限公司  
SHENZHEN ATOM TECHNOLOGY CO., LTD.

TITLE:  
Customer drawing PH1.5单排带内扣 XP HOUSING

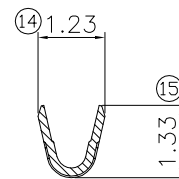
DWG NO.: ATOM-A09791

SCALE	SHEET	REV.
1:1	2/2	AO

1 2 3 4 5 6 7 8



SECTION.A-A



SECTION.B-B

PART NO. TR150360151200

产品代码TR:Terminal简写      00: 预留码  
 产品间距:2.00mm      2: 表示卷装  
 36:带内扣端子      51:镍底,整体镀亮锡  
 01:磷铜C5191

NOTE :

- MATERIAL SPECIFICATION,
  - 1-1.1.CONTACT MATERIAL: PHOSPHOR BRONZE
- TERMINAL PLATING: UBDER PLATING NI 30U"MIN OVER ALL,TIN PLATING 60u"MIN AT CONTACT AREA.
- ELECTRICAL PERFORMANCE,
  - 3-1.RATED VOLTAGE ;AC/DC,50V
  - 3-2.ALLOWABLE CURRENT(MAX.) AND APPLICABLE WIRES ;2.0A(24AWG),1.5A(26AWG),1.0A(28AWG), ( $\phi 0.78 \sim \phi 1.28$ mm)Insulation O.D.
  - 3-3.DIELECTRIC STRENGTH:500V AC FOR 1 MINUTE,
  - 3-4.CONTACT RESISTANCE: 20m $\Omega$  MAX.
  - 3-5.INSULATION RESISTANCE:DC 500V/100 M $\Omega$  MIN.
- COMPLIANT WITH RoHS REACH SVHCH

GENERAL TOLERANCE			UNITS	NAME(INTENDED USE)		<b>ATOM</b> ®深圳市爱特姆科技有限公司 SHENZHEN ATOM TECHNOLOGY CO.,LTD.
SELECT	TOL.	ON.	mm	1.50 带内扣绑线端子		
	1	2	3	MAT'L	PART NO.(INTENDED USE)	
X.XXX	±0.10	±0.15	±0.20	FINISH	TR150360151200	
X.XX	±0.15	±0.25	±0.25		APPD:	TITLE: CUSTOMER DRAWING FOR 1.50mm带内扣绑线端子
X.X	±0.20	±0.35	±0.30	Q'TY	CHKD:	DWG NO.:
X.	±0.25	±0.30	±0.50		DR:	TOM
ANGLE	±2'					SCALE: 1:1    SHEET: 1/1    REV: AO