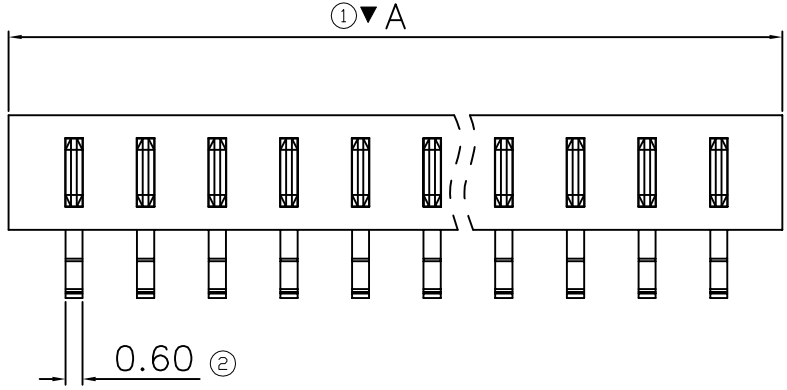


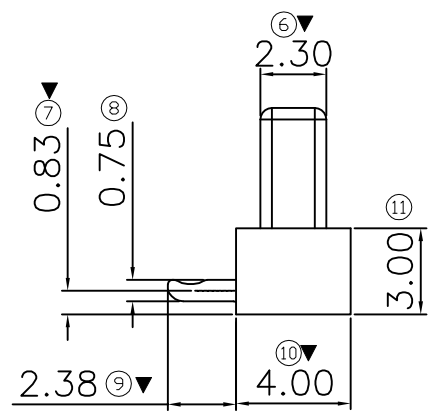
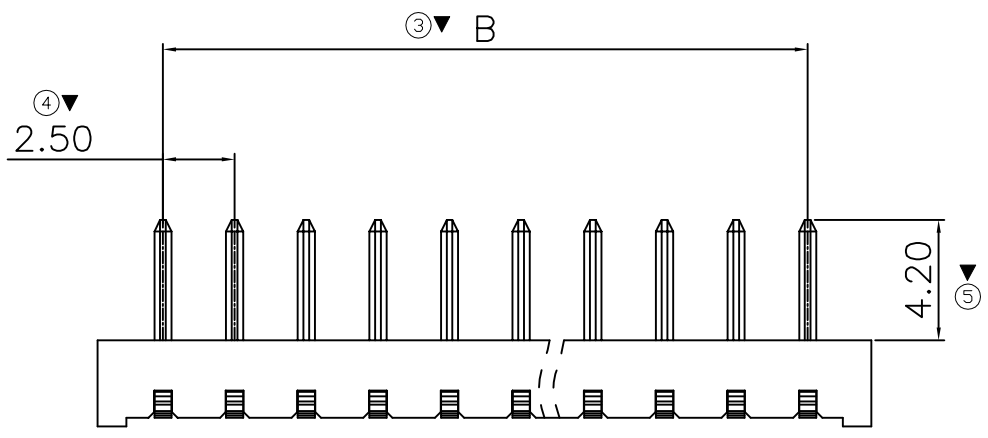
REV.	DATE	ECN NO.	MODIFICATION	APPROVER
AO	2020.07.08	/	NEW	Abel



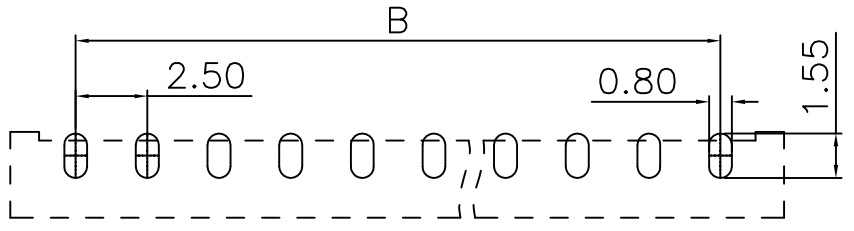
Note:

- Material:
 - Housing: PA9T, UL94V-0 black
 - Contact: C2680, G/F plated over Ni 40u" Min
- Electrical:
 - Voltage rating: 30V DC
 - Current Rating: 7A/Pin
 - Instant current: 10A/Pin
 - Contact Resistance: 20mΩ Max
 - Dielectric withstanding voltage: 500V AC
 - Insulation Resistance: 100MΩ
 - Operating temperature: -25~+85°C.

Major Dimension: ▽
 Products meet RoHS environmental requirements



Pin NO	A	B
2PIN	7.00	2.50
3PIN	9.50	5.00
4PIN	12.00	7.50
5PIN	14.50	10.00
6PIN	17.00	12.50
7PIN	19.50	15.00
8PIN	22.00	17.50
9PIN	24.50	20.00
10PIN	27.00	22.50
11PIN	29.50	25.00
12PIN	32.00	27.50
13PIN	34.50	30.00
14PIN	37.00	32.50
15PIN	39.50	35.00
16PIN	42.00	37.50



Recommended P.C.B. Layout
 Layout Tolerance = ±0.05 mm

GENERAL TOLERANCE			UNITS mm	NAME (INTENDED USE) BATTERY	ATOM ® 深圳市爱特姆科技有限公司 SHENZHEN ATOM TECHNOLOGY CO., LTD.						
SELECT	✓										
TOL.	1	2	3	PART NO. (INTENDED USE) BA250**~M400**	TITLE: Customer Drawing For BATTERY 2.5mm XP DIP 90°H=4.0mm 公座 刀片式						
X.XXX	±0.10	±0.15	±0.20								
X.XX	±0.15	±0.20	±0.25	APPD: Abel	DWG NO.: ATOM-A08698						
X.X	±0.20	±0.25	±0.30								
X.	±0.25	±0.30	±0.50	CHKD: Vicky	<table border="1"> <tr> <td>SCALE</td> <td>SHEET</td> <td>REV.</td> </tr> <tr> <td>1:1</td> <td>1/1</td> <td>AO</td> </tr> </table>	SCALE	SHEET	REV.	1:1	1/1	AO
SCALE	SHEET	REV.									
1:1	1/1	AO									
ANGLE	±2'			DR: CHENG							